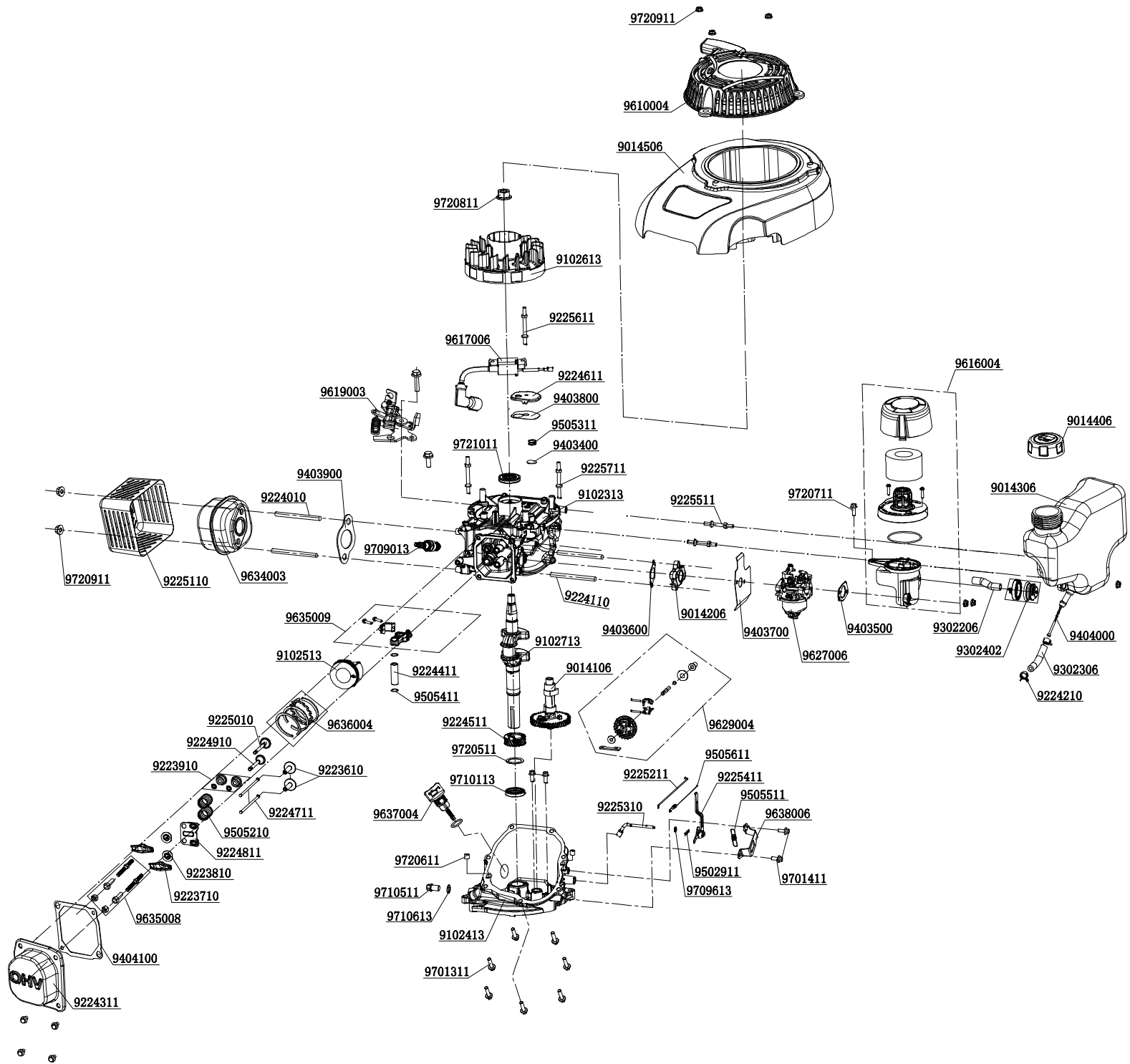


RPM 4234			
Pozice	Obj.číslo	Popis	Počet
	9707713	Blade screw	1
	9200110	Blade washer	1
	9200510	16inch blade	1
	9200611	Blade adapter	1
	9200811	Liner bushing	2
	9704211	Flat Key	1
	9000606	Belt Cover	1
	9708813	Belt	1
5	9201810	Deck-Black	1
6	9001601	7 inch wheel cover	2
	9703011	Nut M8	9
	9011506	7 inch wheel assy	2
	9504211	Spring	2
	9002706	Front axle sleeve	2
	9203311	Front wheel axle	1
	9705311	stop pin	2
	9003006	Holdfast	2
	9701411	Bolt	5
	9703111	Nut	4
	9618007	Gear box assy	1
	9002606	Holdfast	2
	9204011	Rear Axle	1
	9400500	Left Gear Assy	1
	9705510	circlip	4
	9706311	Washer	2
	9002406	Inner wheel	2
	9702711	Bolt	4
4	9605013	Height adjuster	1
	9703511	Nut	6
	9501911	Height adjuster -spring	1
	9011606	8"wheel	2
7	9001701	8" wheel cover	2
	9400400	Right Gear Assy	1
	9202811	screw	2
	9202611	Cutting height rod	1
	9501711	Spring	1
	9700611	Bolt	3
	9204410	Left handle support	1
	9300506	cable protecting bush	1
	9706211	Bolt	2
	9700311	Bolt	4
	9707911	spring washer	3
	9706711	washer	9
	9003106	Clip	2
10	9204910	Inferior Handle	1
9	9204710	Upper handle	1
	9901300	Line	1

	9701111	Bolt	1
3	9205001	Brake lever	1
1	9300106	Handle Tube	1
	9705111	Nut	1
	9003706	Cable fixing seat	1
	9205300	Rope Guide Support	1
	9207211	Bolt	2
2	9007201	Knob	4
	9624003	Grass bag assembly	1
11	9402210	Textile bag	1
	9205410	Grass bag bracket	1
	9206400	Right handle support	1
	9702511	Bolt	2
	9206211	Gear plate	1
	9703211	Nut	2
	9501611	Spring	1
	9705410	circlip	2
	9640002	Component	1
8	9004301	The rear panel	1
	9500911	Spring	1
	9205911	After the board shaft	1



motor DVO 130 OHV (RPM 4234/P)		
Obj.číslo	Popis	Počet
9102313	The Crankshaft Box Body	1
9637004	Oil Gauge Assembly	1
9223610	The Valve Lifter	2
9223710	Rocker Arm	2
9635008	Rocker Arm Fastening Bolt Assembly	2
9505210	Valve Springs	2
9223810	Inlet Valve Spring Seat	2
9403400	Circular Plate	1
9223910	Lower Seat Of Inlet Valve Spring	2
9224210	Fuel Pipe Clip Ring	2
9710511	Drain Bolt M10*1.25*15	1
9224010	Stud M6*77	2
9224110	Stud M6*100	2
9710613	Oil Drain Bolt Washer Φ 10	1
9710113	The Crankshaft Oil Seal Φ 25 * Φ 38 * 7	1
9720511	The Crankshaft Flat Mat	1
9720611	Crankcase Locating Pin	2
9709013	The Spark Plug	1
9502911	Check Back Clip	1
9701411	Bolt M6 * 16	9
9720711	Bolt M6 * 18	2
9701311	Bolt M6 * 25	7
9720811	Flywheel Nut M14*1.5	1
9720911	Nut M6	2
9720911	Nut M6	7
9505311	Breather Valve Spring	1
9709613	Pendulum Stem Seal	1
9403500	Empty Filter Gasket	1
9721011	The Crankshaft Oil Seal Φ 20 X Φ 42 X 7	1
9629004	Centrifugal Governor Gear Assembly	1
9224311	Cylinder Cranium	1
9302206	Exhaust Pipe	1
9102413	Crankcase Cover	1
9102513	The Piston	1
9224411	The Piston Pin	1
9505411	Piston Pin Retaining Ring	2
9636004	Piston Ring Assembly	1
9635009	Connecting Rod Component	1
9224511	Crankshaft Timing Pinion	1
9224611	Back To The Oil Chamber	1
9014106	Camshaft Assembly	1
9224711	The Valve Push Rod	2
9224811	Limit Plate Assembly	1
9224910	Inlet Valve	1
9225010	The Exhaust Valve	1
9616004	Air Filter Assembly	1
9403600	Inlet Gasket	1

9014206	Carburetor Connector Block	1
9403700	Carburetor Gasket	1
9634003	Muffler	1
9225110	Muffler Housing	1
9610004	Start The Pull-Up Component	1
9505511	Speed Regulating Spring B	1
9505611	Adjust Speed C Spring	1
9225211	The Throttle Lever	1
9225310	Swinging Rod	1
9638006	Speed Regulating Controller	1
9225411	Control Arm	1
9014306	The Fuel Tank	1
9014406	The Cap	1
9617006	Igniter	1
9403800	Return Oil Chamber Cover Gasket	1
9225511	Tank Studs	2
9302306	Fuel Pipe From 6 X 10 X 100 Mm	1
9403900	Exhaust Gasket	1
9102613	The Flywheel Components	1
9225611	Igniter Stud	1
9302402	Add Pump	1
9102713	The Crankshaft	1
9014506	In The Hood	1
9619003	The Brake Components	1
9225711	Start Hood Studs	2
9627006	Carburetor Assembly	1
9404000	Filter	1
9404100	Cylinder Head Cover Gasket	1